



Beaufort County Public Works
Stormwater Infrastructure
Project Summary

Project Summary: Salem Drive W

Activity: Routine/Preventive Maintenance

Duration: 08/06/18-01/23/19

Narrative Description of Project:

Project improved 740 L.F. of drainage system. Cleaned out 740 L.F. of roadside ditch. Jetted (1) crossline pipe.

2019-511 / Salem Drive W

	Labor Hours	Labor Cost	Equipment Cost	Material Cost	Contractor Cost	Indirect Labor	Total Cost
AUDIT / Audit Project	1.0	\$21.79	\$0.00	\$0.00	\$0.00	\$0.00	\$21.79
CLPJT / Crossline Pipe - Jetted	4.0	\$89.12	\$76.64	\$13.05	\$0.00	\$57.36	\$236.17
HAUL / Hauling	22.0	\$480.34	\$311.52	\$90.61	\$0.00	\$28.84	\$911.31
RSDCL / Roadside Ditch - Cleanout	85.0	\$2,450.70	\$367.58	\$75.78	\$0.00	\$1,077.25	\$3,971.31
UTLOC / Utility locates	1.5	\$37.05	\$0.00	\$0.00	\$0.00	\$19.85	\$56.90
2019-511 / Salem Drive W Sub Total	113.5	\$3,079.00	\$755.74	\$179.44	\$0.00	\$1,183.29	\$5,197.47
Grand Total	113.5	\$3,079.00	\$755.74	\$179.44	\$0.00	\$1,183.29	\$5,197.47

Before

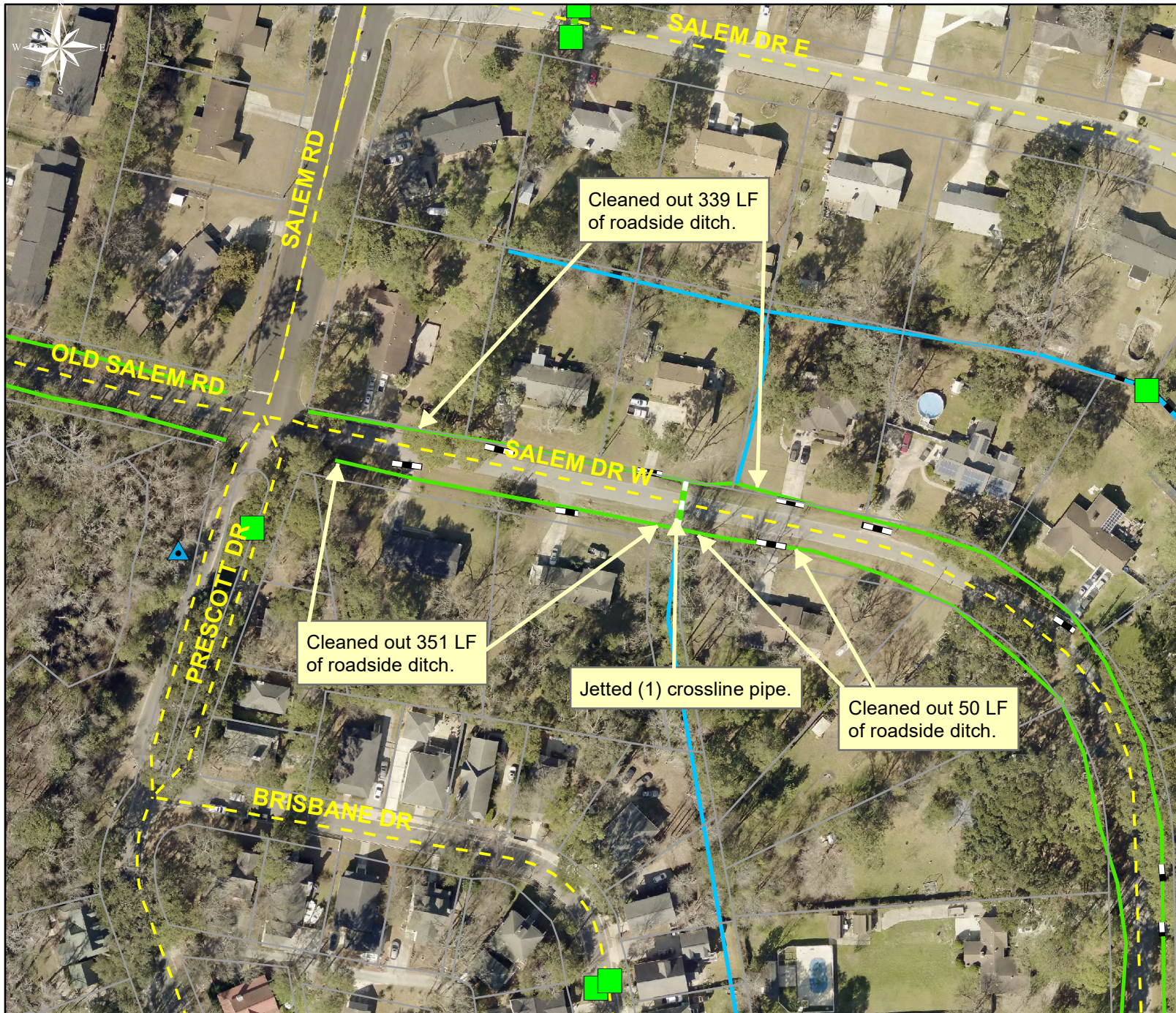


During



After





Project: Salem Drive W

Activity: Routine/ Preventive Maintenance

Project #: 2019-511

Township/SW Dist: Port Royal Island/6

Completed: January 2019

Legend

Drainage Type

- Access Pipe
- Bleeder Pipe
- Channel Pipe
- Channel
- Stream
- Crossline Pipe
- Driveway Pipe
- Lateral
- Lateral Pipe
- River
- Road Pipe
- Roadside
- Roadside Pipe

0 30 60 120 180 240
Feet

1 inch = 130 feet

Prepared By: BC Stormwater Management Utility
Date Print: 03/28/19
File: C:\project summaries map\Salem Drive W_2019-511